



---

## Careers In Construction Is Quail's Charitable Arm, Focusing On Workforce Development In Southwest Washington

**Careers in Construction Core Purpose:** Lead the efforts in providing top notch facilities, programing and networking for growth of C.T.E Construction Programs in Southwest Washington.

We started less than 3 years ago with fewer than 100 students enrolled in construction classes. Now in the 2023-2024 school year there are over 700 students enrolled!

---

### School Built Sheds

Introducing skilled trades to our future builders!



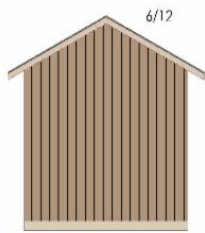
---

Cascadia Tech Has Built Six Sheds This Year,  
All Are Presold!

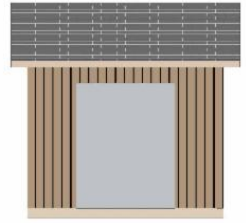


---

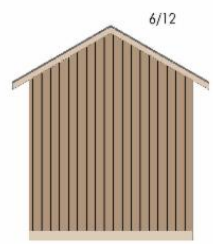
School Built Shed Plans



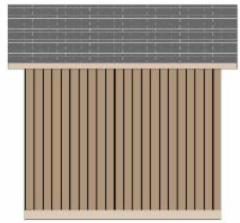
4 West Elevation  
A2 SCALE: 3/8" = 1'-0"



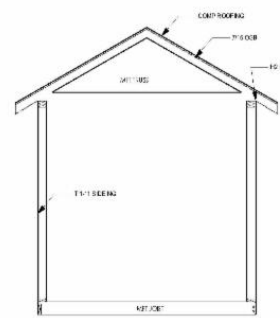
2 North Elevation  
A2 SCALE: 3/8" = 1'-0"



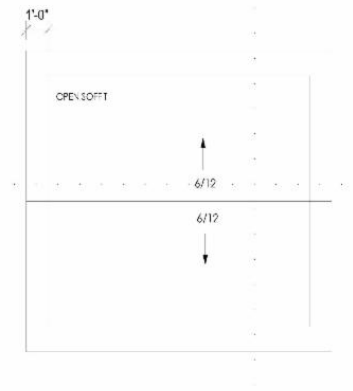
1 East Elevation  
A2 SCALE: 3/8" = 1'-0"



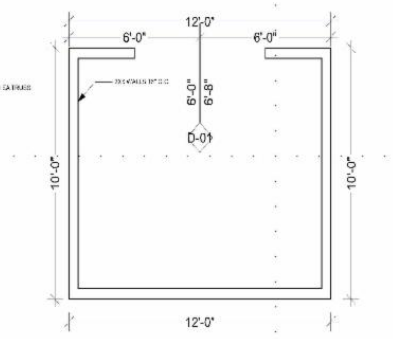
3 South Elevation  
A2 SCALE: 3/8" = 1'-0"



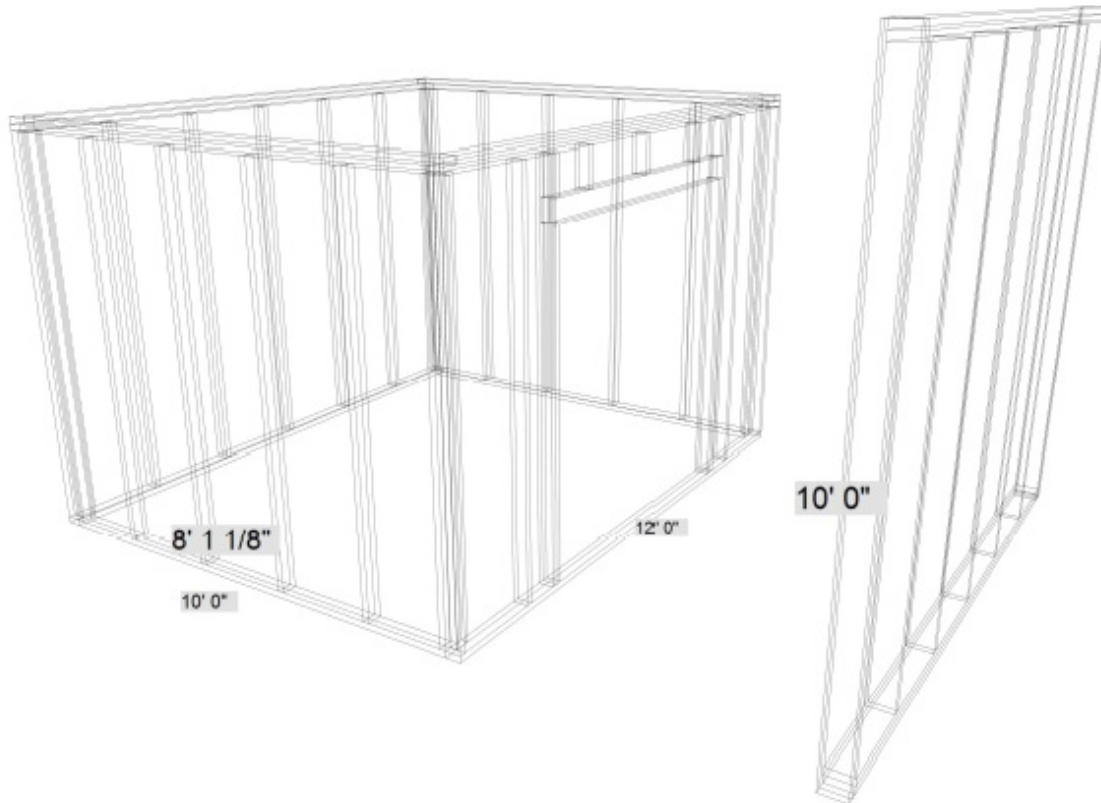
6 Building Section B  
A2 SCALE: 1/2" = 1'-0"



7 ROOF  
A2 SCALE: 1/2" = 1'-0"



5 First Floor  
A2 SCALE: 1/2" = 1'-0"



## CTE Shed

CTE 10x12 6-0DR  
Shed 2 - Main Floor  
2  
120 SF

---

Hudson Bay High School Shed Building



---

Shed building programs at Vancouver School District, Evergreen School District, Ridgefield School District and La Center School District launched this spring 2024!

If you are interested in ordering a shed,  
please call Jon Girod at 360-907-5800

Quail Homes | 4501 NE Minnehaha Ste 200, Vancouver, WA 98661

[Unsubscribe jon@quailhomes.com](mailto:jon@quailhomes.com)

[Update Profile](#) | [Constant Contact Data Notice](#)

Sent by [jon@quailhomes.com](mailto:jon@quailhomes.com) powered by



Try email marketing for free today!